

ANPIC Simple Operation Guide : Smartphone

▼University of Fukui ANPIC Website

<https://anpic13.jecc.jp/u-fukui>



Login ID : [Students]Student ID number [Staff]Staff ID number

Password : Password registered on the initial registration page

How to Register or change e-mail address or password

Login



Access to the ANPIC site.
Enter the login ID and password which have been set for you and press the “ログイン[login]” button to login.

- ※When you access the ANPIC site, use the URL given by the administrator or QR-code.
- ※ Be careful of typing mistakes.

How to display the menu



Since, by default, the menu is hidden on smartphones and tablets, you need to click on the menu button on the upper left in order to display the menu and access your desired page.

Register or change e-mail address or password



Please access the account setting screen from “アカウント設定[Account settings]” in the menu and register or change your desired field with the “編集する[Edit]” button for 【メール[Mai]】 and 【ログインパスワード[Login password]】.

- After registering your e-mail address, please check whether the address change confirmation e-mail has arrived.
- ※If you do not receive the address change confirmation e-mail, please check your e-mail reception settings and, after changing the e-mail settings, try to send a “テストメール[test e-mail]” to confirm you are able to properly receive messages.
- ※Please be careful of typing mistake your e-mail address.

Edit basic information

To change the name, organization information, or login ID, please contact the administrator.

Setup Procedure for App or LINE

Smartphone user can use app and receive notification via LINE

※Even if you receive notification on LINE, you still need to install ANPICapp.

Set up according to the following procedure.

1. Install the app

On the App Store/Play Store/Google Play, search for “anpic” and install the app.

iOS devices



Android devices



2. Launch the app and log in



1. Touch the icon of the installed app to launch the app.
2. After launching the app, if a message asking to enable push notifications is displayed, touch “OK” to enable push notifications.
3. Either:
 - a. Input your ANPIC site URL directly.
 - b. Touch the QR icon and read the QR code with your camera.
3. If a message asking you to confirm permission to use the camera is displayed, touch [OK], etc. to accept.
- ** The QR code can also be displayed using “QRコード[QR code]” at the bottom of the login screen.
4. Input your personal Login ID and password and touch the “ ログイン [Login]” button to log in.

※ If you have forgotten your password, please ask the administrator to provide you with a new password.

★If you log out, the next time you launch the app, you will have to input the URL, Login ID, and password again.

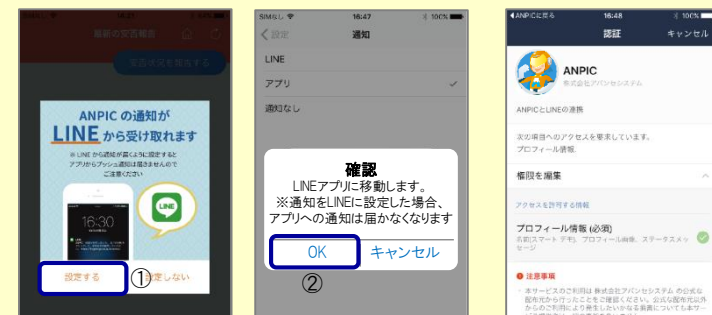
★If you change your device, please re-register your URL, Login ID and password

3. Configure notification options

To receive notifications via LINE

★ The LINE app must already be installed.

* If you receive notifications via LINE, you will not receive notifications from the app



1. When the LINE notification settings screen appears, touch “設定する[Configure]”
2. When the confirmation message appears, touch “OK”
3. When the authentication screen appears, touch “同意する[Agree]”.



4. When the Add Friends screen appears, touch “追加[Add]”
5. Check the LINE chat screen for the above notification.
6. To finish setup, open the ANPIC app and confirm that “LINE” is checked in the “通知[Notifications]” screen within “設定[Settings]”

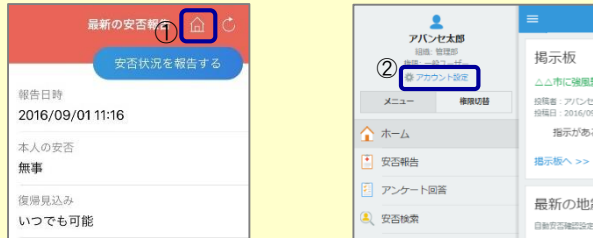
To receive notifications via the app


* If you receive notifications via the app, you will not receive notifications from LINE

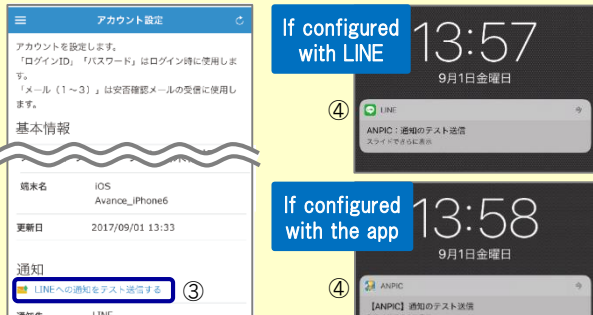


1. When the LINE notification settings screen appears, touch “設定しない[Don't Configure]”
2. When a message about your configuration method appears, touch “OK.”

4. Access the website and send a test message



1. Open the Safety Report screen and touch the  icon to go to the website.
2. From the menu, touch “アカウント設定[Account Settings]” to open the “Account Settings” screen.



3. Underneath “スマートフォンアプリ端末情報[Smartphone app device information]”, touch “LINE通知をテスト送信する[Send a LINE notification test message]” or “プッシュ通知をテスト送信する[Send a push notification test message]”
4. If you receive the push notification in LINE or ANPIC, setup is complete **If you do not receive the notification, please see “If notifications are not delivered to LINE or ANPIC” on the opposite side of this sheet.**

- ★ If changing notification settings after initial setup (LINE/アプリ[app]/通知なし[disabled]), please change via the ANPIC options screen.
- ★ If receiving notifications via LINE, please be sure not to delete the ANPIC app.

If notifications are not delivered to LINE or ANPIC app and the other notes

If notifications are not delivered, please check the following points. (* The names of the screens may vary according to your smartphone.)

If receiving notifications via LINE

1. Unblock the ANPIC account.
2. Update LINE to the latest version.

If receiving notifications via the app

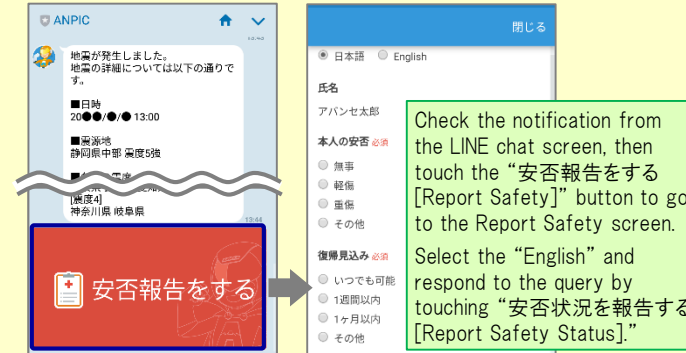
1. Turn on push notifications in your smartphone device settings
Settings → Notifications → ANPIC
Settings → Apps → Manage apps → ANPIC
Settings → Sound and notifications → Manage notifications
2. Update app to the latest version.

Be careful in the future

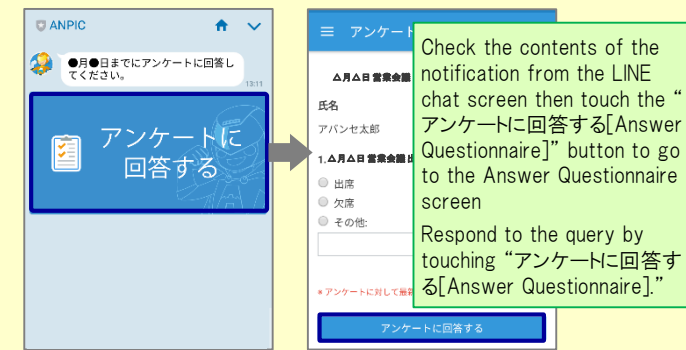
- Do not delete app even if LINE is set.
- Do not log out of app regardless of settings.

How to respond via LINE

Report safety situation



Answer the questionnaire



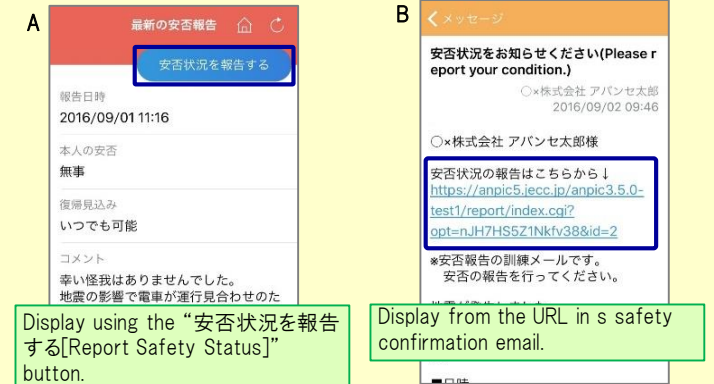
How to use the ANPIC app

Open the menu



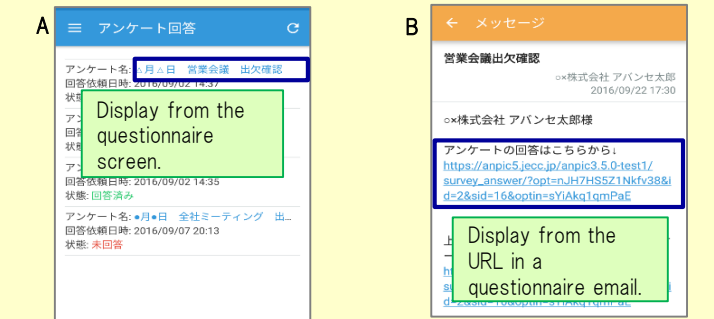
Report safety situation

Report your safety situation by either way of A or B



Answer the questionnaire

Answer the Questionnaire by either way of A or B.



Changing where you receive notifications

From the menu, touch “設定[Settings]” to open the Settings screen. Select “通知[Notifications]” to open the Notifications screen. Select from LINE/アプリ[app]/通知なし[don't notify me.]

- Log in to app again after changing your smartphone.
- Keep updated the latest version of LINE and app.